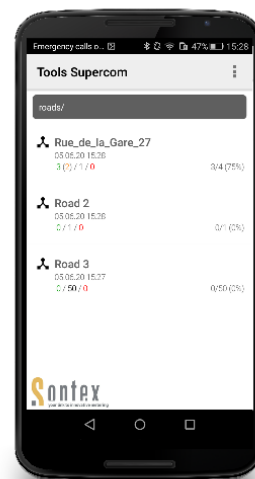
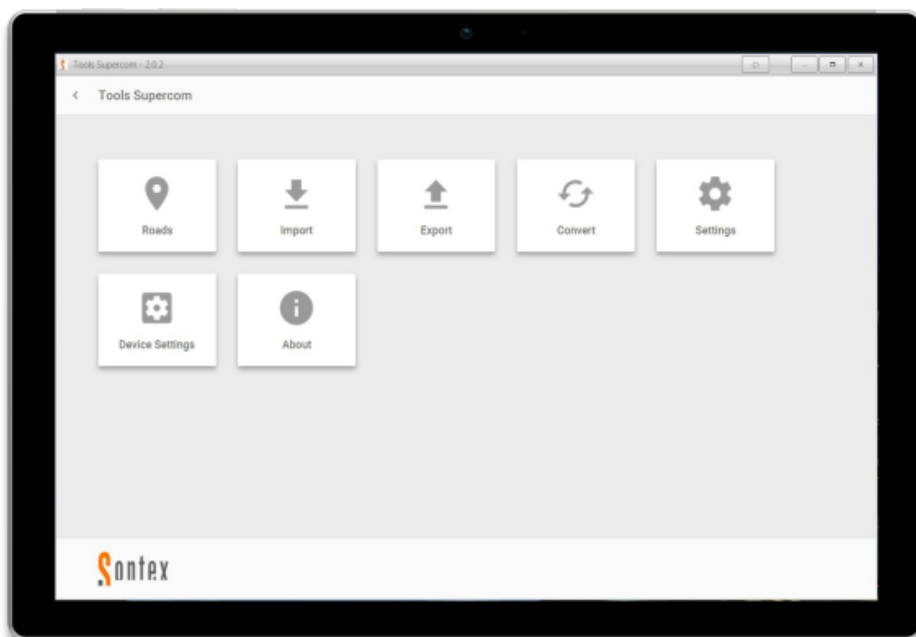


Tools Supercom

Software and App for mobile readout and configuration of smart meters



По вопросам продаж и поддержки обращайтесь:

Архангельск (8182)63-90-72
Астана +7(7172)727-132
Астрахань (8512)99-46-04
Барнаул (3852)73-04-60
Белгород (4722)40-23-64
Брянск (4832)59-03-52
Владивосток (423)249-28-31
Волгоград (844)278-03-48
Вологда (8172)26-41-59
Воронеж (473)204-51-73
Екатеринбург (343)384-55-89
Иваново (4932)77-34-06
Ижевск (3412)26-03-58
Иркутск (395) 279-98-46
Киргизия (996)312-96-26-47

Казань (843)206-01-48
Калининград (4012)72-03-81
Калуга (4842)92-23-67
Кемерово (3842)65-04-62
Киров (8332)68-02-04
Краснодар (861)203-40-90
Красноярск (391)204-63-61
Курск (4712)77-13-04
Липецк (4742)52-20-81
Магнитогорск (3519)55-03-13
Москва (495)268-04-70
Мурманск (8152)59-64-93
Набережные Челны (8552)20-53-41
Нижний Новгород (831)429-08-12
Казахстан (772)734-952-31

Новокузнецк (3843)20-46-81
Новосибирск (383)227-86-73
Омск (3812)21-46-40
Орел (4862)44-53-42
Оренбург (3532)37-68-04
Пенза (8412)22-31-16
Пермь (342)205-81-47
Ростов-на-Дону (863)308-18-15
Рязань (4912)46-61-64
Самара (846)206-03-16
Санкт-Петербург (812)309-46-40
Саратов (845)249-38-78
Севастополь (8692)22-31-93
Симферополь (3652)67-13-56
Россия (495)268-04-70

Смоленск (4812)29-41-54
Сочи (862)225-72-31
Ставрополь (8652)20-65-13
Сургут (3462)77-98-35
Тверь (4822)63-31-35
Томск (3822)98-41-53
Тула (4872)74-02-29
Тюмень (3452)66-21-18
Ульяновск (8422)24-23-59
Уфа (347)229-48-12
Хабаровск (4212)92-98-04
Челябинск (351)202-03-61
Череповец (8202)49-02-64
Ярославль (4852)69-52-93

Эл. почта: sxf@nt-rt.ru || Сайт: <https://sontex.nt-rt.ru/>

Application

The Sontex software **Tools Supercom** is an easy to use and intuitive PC software and Android App. It is designed for walk-by readout and configuration of system components and smart meters.

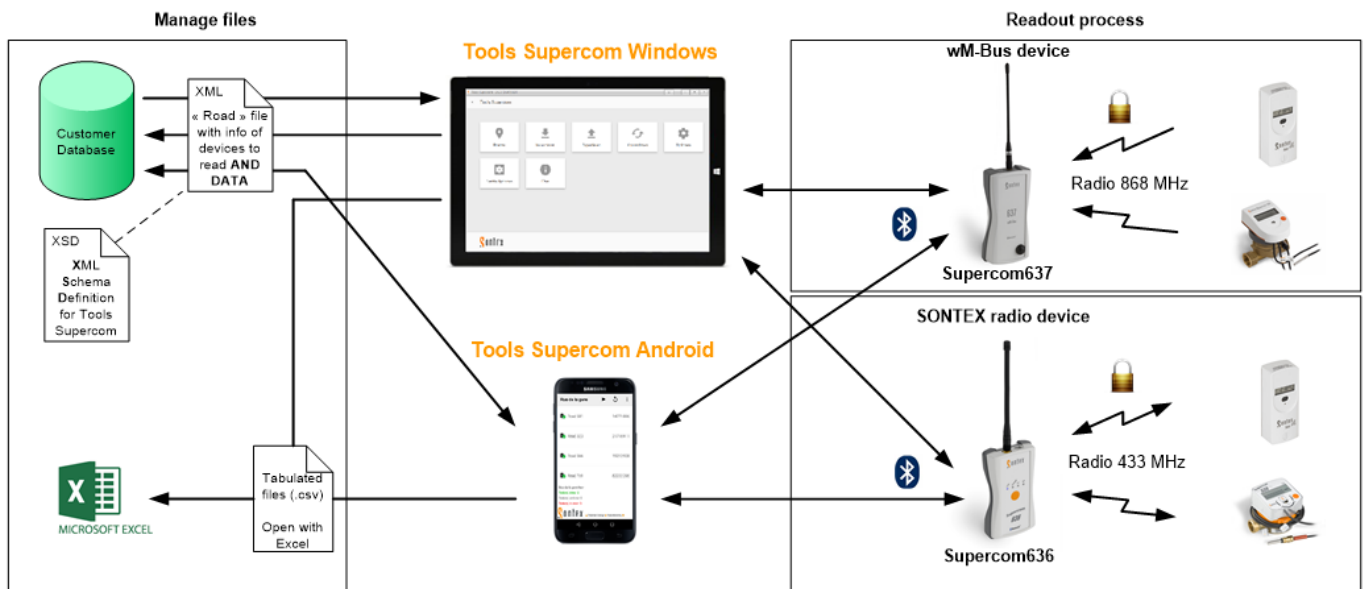
It runs on:

- Windows OS for PCs or tablets
- Android OS for smartphones or tablets

Both, the software and the App, support the 2 models of radio modems:

- Supercom 636 for SONTEX radio devices 433 MHz
- Supercom 637 for wM-Bus and OMS devices 868 MHz

Readout concept



Tools Supercom Windows

The Software **Tools Supercom Windows** has a simple and logical icon-based navigation that makes the application very easy to use. The application offers multiple features which make the handling data simple, fast, and easy.

The software comes in two editions, one having additional features:

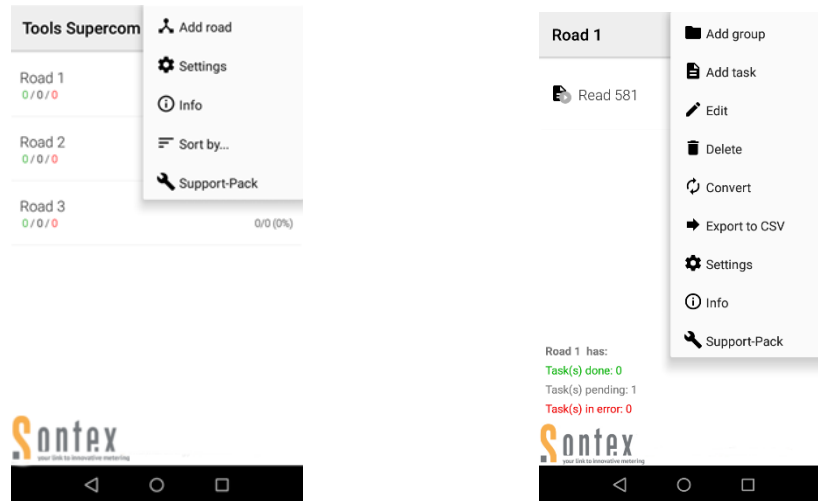
- **Basic**
- **Professional**

Short features overview for the Basic and **Professional** levels (Version 2.5.x):

	Basic	Pro
Support of the Supercom 636 modem (SONTEX radio)	✓	✓
Readout of SONTEx radio devices	✓	✓
Parametrisation of SONTEx radio devices	✓	✓
Support of the Supercom 637 wM-Bus and OMS modem	✓	✓
Readout of Sontex wM-Bus and OMS devices	✓	✓
Three global AES-128 keys	✓	✓
Detailed road information in roads view	✓	✓
Editing of tasks	✓	✓
Filtering of tasks in the road	✓	✓
Copy&paste and drag&drop over multiple roads	✓	✓
Road conversion (param<->read)	✓	✓
Sorting of road files	✓	✓
Filtering of road files	✓	✓
Multi-editing	✓	✓
Manual fall back of failed read task on selected devices	✓	✓
Editing of Sontex 556 and 566 LCD sequence	✓	✓
Export readouts to csv files	✓	✓
Internationalisation (EN, DE, FR, IT)	✓	✓
Update check	✓	✓
Direct update from Tools Supercom	✓	✓
Search task for a specific OMS device	✗	✓
Scan of OMS devices	✗	✓
Individual AES-128 keys	✗	✓
Support of the OMS Key Exchange file format	✗	✓
Download of AES keys from Exchange platform.app	✗	✓
Decryption of tasks/roads after a readout	✗	✓
Templates	✗	✓

Tools Supercom Android

The App **Tools Supercom Android** changes your smartphone into an efficient readout tool using its Bluetooth connection and offering multiple features.
The App Tools Supercom Android has simple and logical main and road menus with several possibilities to create and edit tasks.



Short features overview (Version 3.0.x):

	Android
Support of the Supercom 636 modem (SONTEX radio)	✓
Readout of SONTEx radio devices	✓
Parametrisation of SONTEx radio devices	✓
Support of the Supercom 637 wM-Bus and OMS modem	✓
Readout of Sontex wM-Bus and OMS devices	✓
Three global AES-128 keys	✓
Maximum recommended number of tasks per road: 1000	✓
Same road file format as Tools Supercom Windows	✓
Detailed road information in roads view	✓
Road conversion (param<->read)	✓
Sorting of road files	✓
Editing of tasks	✓
Editing of 556 LCD sequence	✓
Coloured task state and warning	✓
Displaying of the readout results	✓
Export readouts to csv file	✓
Internationalisation (EN, DE, FR, IT)	✓
Scan of OMS devices	✓
Individual AES-128 keys	✓
Support of the OMS Key Exchange file format	✓
Download of AES keys from exchange-platform.app	✓
Decryption of tasks/roads after a readout	✓
Task creation from QR-code	✓
License installation from QR-code	✓
Road location support (display, name suggestion)	✓

Software and hardware requirements

For the **Windows** version the following hardware and software are needed:

- PC or tablet with: Windows 7 or 10 32/64 bits
- 2 GB memory (RAM)
- Screen resolution of 1024x768 pixels
- Supercom 636 and/or Supercom 637 radio modem
- Bluetooth or USB port connection to connect the radio modem
- Supercom 636
- Bluetooth connection to connect to the radio modem Supercom 637

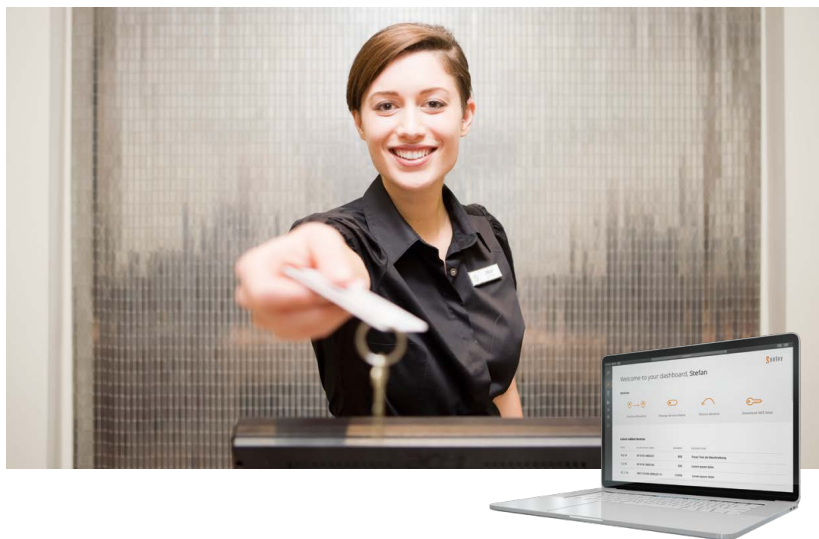
For the **Android** version the following hardware and software are needed:

- Android device with minimum installed platform version 4.1.x (Jelly Bean)
- 2 GB memory (RAM)
- Minimum 100 MB free internal Memory for up to 4 roads at maximum. More internal memory depending on the size and quantities of roads
- CPU quad-core 1.3 GHz (better octa-core)
- Screen resolution of 720x1280 pixels
- Supercom 636 and/or Supercom 637 radio modem
- Bluetooth connection to connect the Sontex radio modem Supercom 636 and/or Supercom 637
- Windows PC for copying the App and road files to the Android device, though the App can be downloaded from the Sontex Extranet directly

The Tools Supercom Android App 1.3.0 was successfully tested on following devices:

Model	Android Version	Display Size	Resolution Pixel	Processor	Internal Memory	RAM
HTC 10 *	7.0	5.2"	1440 x 2560	Quad-core 2.2 GHz	32 GB	4 GB
HTC One A9	7.0	5.0"	1080 x 1920	Octa-core (4 x 1.5 GHz + 4 x 1.2 GHz)	16 GB	2 GB
HTC One M8 *	6.0	5.0"	1080 x 1920	Quad-core 2.3 GHz	16 GB	2 GB
Huawei P8 lite (ALE-L21)	6.0	5.0"	720 x 1280	Octa-core 1.2 GHz	16 GB	2 GB
Huawei P9 (VNS-L21)	6.0	5.2"	1080 x 1920	Octa-core (4 x 2.5 GHz + 4 x 1.8 GHz)	32 GB	3 GB
Huawei Y6II Compact *	5.1	5.5"	720 x 1280	Quad-core 1.3 GHz	16 GB	2 GB
Nokia 8	8.1	5.3"	1440 x 2560	Octa-core (4 x 2.5 GHz + 4 x 1.8 GHz)	128 GB	6 GB
Samsung Galaxy tab A	7.0	10.1"	1920 x 1200	Octa-core 1.6 GHz	16 GB	2 GB
Samsung Galaxy S8	7.0	5.8"	1440 x 2960	Octa-core 2.3 GHz	64 GB	4 GB
Samsung Galaxy xCover 4 *	7.0	5.0"	720 x 1280	Quad-core 1.4 GHz	16 GB	2 GB
Sony Xperia Z5	7.1.1	5.2"	1080 x 1920	Octa-core (4 x 1.5 GHz + 4 x 2.0 GHz)	32 GB	2 GB

(*) It is not recommended to use the export function for roads over 500 devices.



This new service manages your individual AES keys digitally and securely thanks to the web platform developed by Sontex.

The web-based exchange platform distributes and manages personal AES keys for users of Sontex devices, naturally 24/7.

Thanks to protected access, the user-friendly platform offers fully secure key management. Additional services, such as key synchronisation with a variety of readout software, will be available in the near future.

- Individual AES keys for Sontex products
- Secure data transmission guaranteed thanks to bidirectional end-to-end encryption
- 24/7 access
- Highly secure web exchange platform
- Versatile services in development



Secure and easy-to-use

End-to-end encryption while remaining highly user-friendly.



Versatile

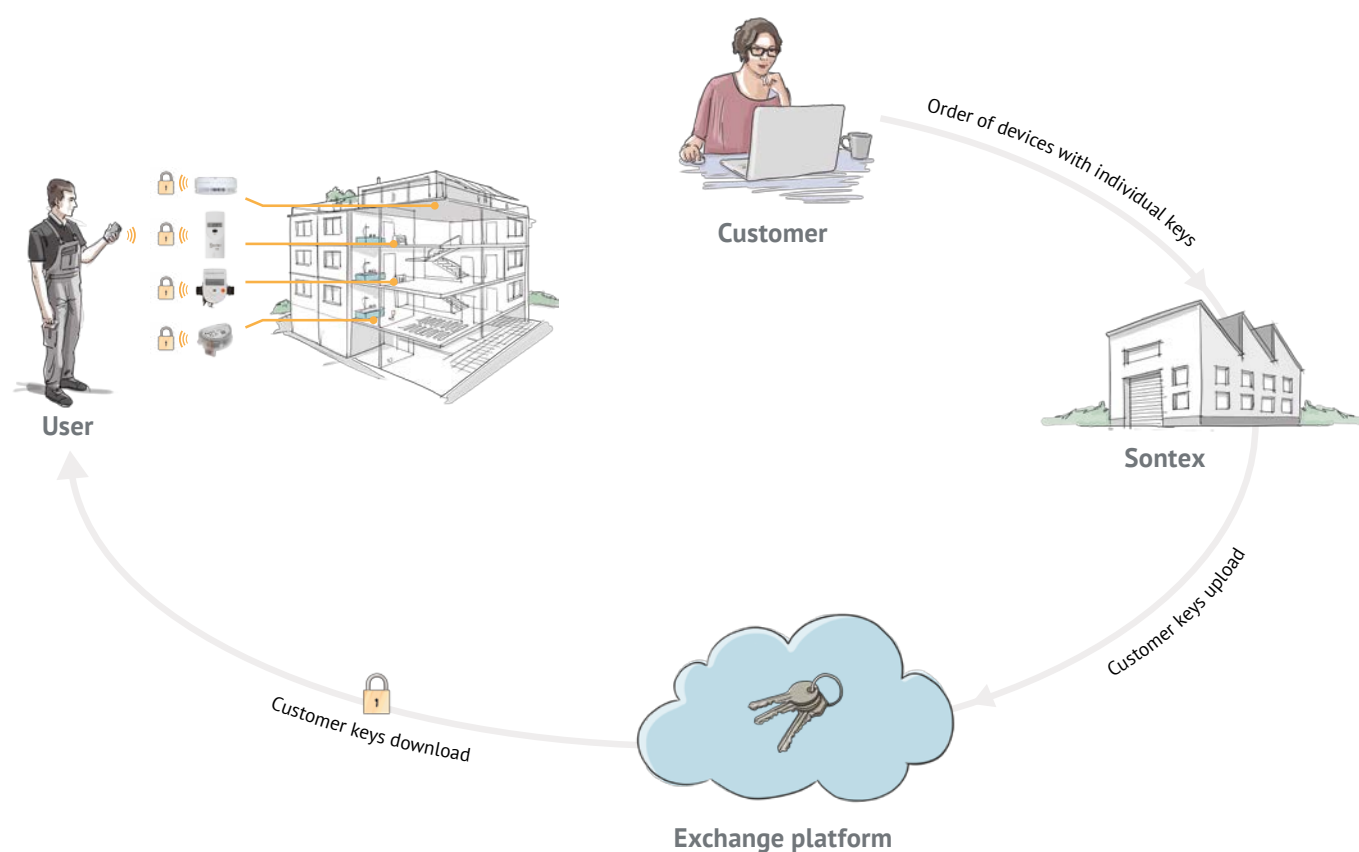
Platform supports numerous services.



Availability

AES keys can be requested at any time and are immediately available.

The key manager solution



Specifications

Technology	User interface	Web-application with modern UI running on Web browser
	Server	Cloud based, hosted in Switzerland
	Supported browsers	Tested with Chrome and Firefox / Windows Explorer not supported
Key exchange	Standard file format	Signed XML file with encrypted AES keys, following the specification from OMS-Group
	Web service REST (JSON)	For synchronisation of the AES keys to Tools Supercom or other application software (planned)
Security	https (TLS)	End-to-end encryption (traffic)
	2-way authentication for users	Authentication through a smartphone app (time-based one-time password)
	User roles	Role based access control to keys and software features
Availability	Uptime	99.5%
Supported languages	Languages	EN/DE/IT/FR



LoRaWAN™ for Sontex devices



The Internet of Things (IoT) has long been a reality for Sontex customers. Today, the promising LoRaWAN™ technology is also available for our devices.

LoRaWAN™ is an IoT communication protocol that allows long range, bidirectional communication at low cost and low power consumption. The consumption data are thus always available and can be transmitted securely thanks to end-to-end encryption.

Sontex not only offers LoRaWAN™ enabled devices but also supports its customers during commissioning and in the choice of the right partner for setting up the network.



Cost-effective

Fewer gateways, lower costs.



Available

Data is available everywhere and at any time.



Long range

Stable radio link over several kilometres.



Secure

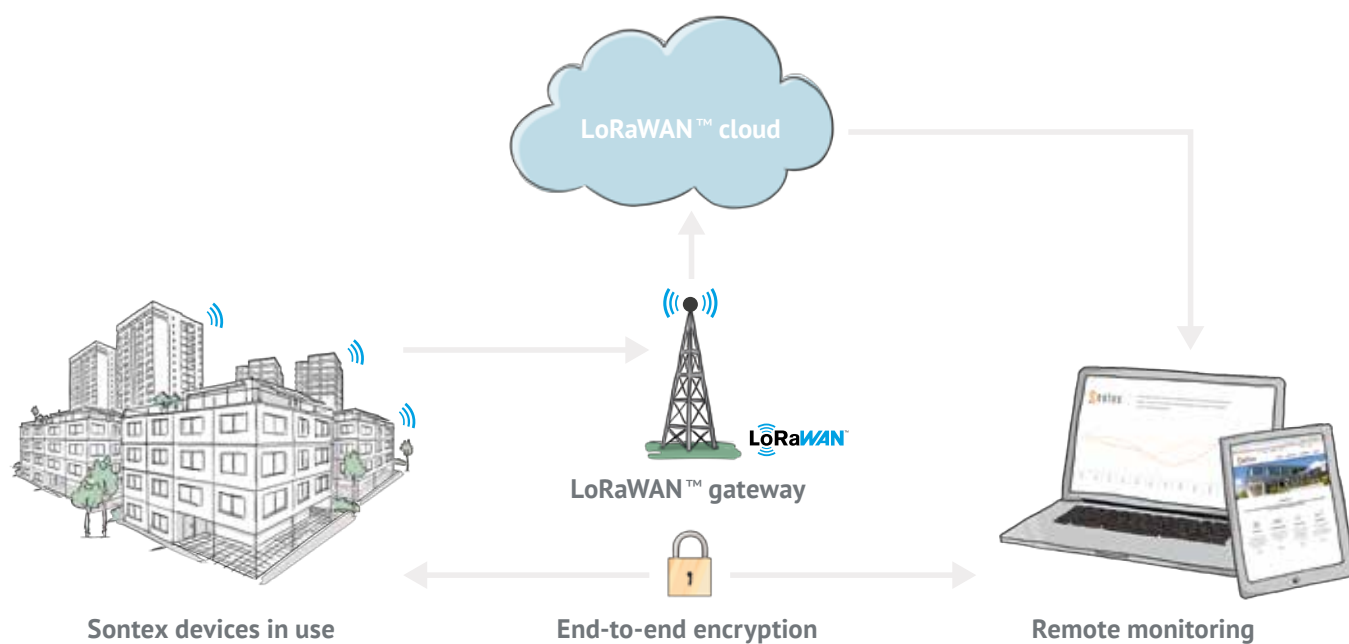
Offers secure end-to-end encryption.



Versatile

Supports supplementary services such as monitoring.

The LoRaWAN™ solution



Specifications

LoRaWAN	Region	EU 868
	Specification	1.0.3
	Operating class	A
	Activation	OTAA (Over The Air Activation) or ABP (Activation By Personalization)
LoRa	Modulation	LoRa
	Bandwidth	125 kHz
	Data rate	DR0 to DR5
	Bit rate	0.3 to 5 kbps
	Operating cycle	< 1%
	Tx power	14 dBm
	Range	Over several kilometres

Applications

Our products are used for the following purposes:

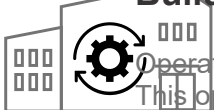


Home automation

Transparency and reliability are prerequisites for a fair cost allocation. Sontex offers realtors and owners many possibilities for parameterizing and reading out data.



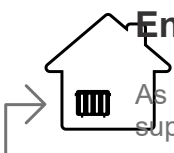
Building automation



Operating, monitoring and coordinating multiple devices are the basis of modern building automation. This optimises energy consumption and operating costs. Sontex products enhance your comfort.



Energy suppliers



As a provider of metering solutions for heating and cooling applications, Sontex ensures that energy suppliers can benefit from precise measurements and reliable data.

Home automation

Transparency and reliability are prerequisites for a fair cost allocation. Sontex offers realtors and owners many possibilities for parameterizing and reading out data.

Quicklinks

[Supercal 5](#)

[Software Tools Supercom](#)

[Supercom 647](#) [Supercom](#)

[637](#)

[Ei6500-SA2](#)

[Supercom 327](#) [Supercom](#)

[323](#)

[Sontex 566](#)

[Sontex 565](#)

[Sontex 868](#)

[Supercom 580](#)

[Supercom 581](#)

[Supercom 587](#)

[Supercom 582](#)

[Supercom W2-L](#)

[Supercom 583](#)

[Supercal 739](#)

[Supercom 541](#)

[Superstatic 440](#)

[Superstatic 789](#)

[Superstatic 749](#)

[Supercom 646](#)

[Supercom 636](#)

[Supercom 656](#)

Building automation

Operating, monitoring and coordinating multiple devices are the basis of modern building automation. This optimises energy consumption and operating costs. Sontex products enhance your comfort.

Quicklinks

[Supercal 5](#)

[Software Tools](#)

[Supercom](#)

[Supercom 647](#)

[Supercom 637](#)

[Ei6500-SA2](#)

[Supercom 327](#)

[Supercom 323](#)

[Sontex 566](#)

[Sontex 565](#)

[Sontex 868](#)

[Supercal 531](#)

[Supercom 580](#)

[Supercom 581](#)

[Supercom 587](#)

[Supercom 582](#)

[Supercom W2-L](#)

[Supercom 583](#)

[Supercal 739](#)

[Supercom 541](#)

[Supercom 646](#)

[Supercom 636](#)

[Supercom 656](#)

[Sontex 624 M-Bus](#)

[Superstatic 440](#)

[Superstatic 789](#)

[Superstatic 749](#)

Energy suppliers

As a provider of metering solutions for heating and cooling applications, Sontex ensures that energy suppliers can benefit from precise measurements and reliable data.

Quicklinks

[Supercal 5](#)

[Supercal 531](#)

[Superstatic 440](#)

[Superstatic 789](#)

По вопросам продаж и поддержки обращайтесь:

Архангельск (8182)63-90-72
Астана +7(7172)727-132
Астрахань (8512)99-46-04
Барнаул (3852)73-04-60
Белгород (4722)40-23-64
Брянск (4832)59-03-52
Владивосток (423)249-28-31
Волгоград (844)278-03-48
Вологда (8172)26-41-59
Воронеж (473)204-51-73
Екатеринбург (343)384-55-89
Иваново (4932)77-34-06
Ижевск (3412)26-03-58
Иркутск (395) 279-98-46
Киргизия (996)312-96-26-47

Казань (843)206-01-48
Калининград (4012)72-03-81
Калуга (4842)92-23-67
Кемерово (3842)65-04-62
Киров (8332)68-02-04
Краснодар (861)203-40-90
Красноярск (391)204-63-61
Курск (4712)77-13-04
Липецк (4742)52-20-81
Магнитогорск (3519)55-03-13
Москва (495)268-04-70
Мурманск (8152)59-64-93
Набережные Челны (8552)20-53-41
Нижний Новгород (831)429-08-12
Казахстан (772)734-952-31

Новокузнецк (3843)20-46-81
Новосибирск (383)227-86-73
Омск (3812)21-46-40
Орел (4862)44-53-42
Оренбург (3532)37-68-04
Пенза (8412)22-31-16
Пермь (342)205-81-47
Ростов-на-Дону (863)308-18-15
Рязань (4912)46-61-64
Самара (846)206-03-16
Санкт-Петербург (812)309-46-40
Саратов (845)249-38-78
Севастополь (8692)22-31-93
Симферополь (3652)67-13-56
Россия (495)268-04-70

Смоленск (4812)29-41-54
Сочи (862)225-72-31
Ставрополь (8652)20-65-13
Сургут (3462)77-98-35
Тверь (4822)63-31-35
Томск (3822)98-41-53
Тула (4872)74-02-29
Тюмень (3452)66-21-18
Ульяновск (8422)24-23-59
Уфа (347)229-48-12
Хабаровск (4212)92-98-04
Челябинск (351)202-03-61
Череповец (8202)49-02-64
Ярославль (4852)69-52-93

Эл. почта: sxf@nt-rt.ru || Сайт: <https://sontex.nt-rt.ru/>