

Smoke detector Type C

Ei6500-SA2-R / Ei6500-SA2-O



Application

The Supercom Ei6500-SA2-R or -SA2-O is a smoke detector for remote inspection in accordance with the inspection method C defined in DIN 14676-1. The smoke detector works on the scattered light principle and triggers an alarm as soon as smoke has entered the optical smoke chamber. The built-in piezo-electronic horn alarms with a sound level of at least 89 dB(A) at a distance of three meters.

As soon as there are no more smoke particles in the smoke chamber, the smoke detector is automatically reset and the alarm is switched off.

Feature

The remote inspection of the detector SA2-O is done with the unidirectional wM-Bus radio or via the bidirectional Sontex radio for the SA2-R. Both radio transmissions send the following status information of the detector:

- Device type, serial number of the radio module, manufacturer ID
- Commissioning date
- Obstacle detection system status, detector removed, installation and environmental status, battery, sound generator and sensor status
- Distance to the next obstacle during the last installation
- Time and date of the system
- Dirt level of the smoke chamber
- Date of the last sound generator test
- Incidents since the last readout: test button activated, real alarm, dismounting (frequency and duration)

По вопросам продаж и поддержки обращайтесь:

Архангельск (8182)63-90-72
Астана +7(7172)727-132
Астрахань (8512)99-46-04
Барнаул (3852)73-04-60
Белгород (4722)40-23-64
Брянск (4832)59-03-52
Владивосток (423)249-28-31
Волгоград (844)278-03-48
Вологда (8172)26-41-59
Воронеж (473)204-51-73
Екатеринбург (343)384-55-89
Иваново (4932)77-34-06
Ижевск (3412)26-03-58
Иркутск (395) 279-98-46
Киргизия (996)312-96-26-47

Казань (843)206-01-48
Калининград (4012)72-03-81
Калуга (4842)92-23-67
Кемерово (3842)65-04-62
Киров (8332)68-02-04
Краснодар (861)203-40-90
Красноярск (391)204-63-61
Курск (4712)77-13-04
Липецк (4742)52-20-81
Магнитогорск (3519)55-03-13
Москва (495)268-04-70
Мурманск (8152)59-64-93
Набережные Челны (8552)20-53-41
Нижний Новгород (831)429-08-12
Казахстан (772)734-952-31

Новокузнецк (3843)20-46-81
Новосибирск (383)227-86-73
Омск (3812)21-46-40
Орел (4862)44-53-42
Оренбург (3532)37-68-04
Пенза (8412)22-31-16
Пермь (342)205-81-47
Ростов-на-Дону (863)308-18-15
Рязань (4912)46-61-64
Самара (846)206-03-16
Санкт-Петербург (812)309-46-40
Саратов (845)249-38-78
Севастополь (8692)22-31-93
Симферополь (3652)67-13-56
Россия (495)268-04-70

Смоленск (4812)29-41-54
Сочи (862)225-72-31
Ставрополь (8652)20-65-13
Сургут (3462)77-98-35
Тверь (4822)63-31-35
Томск (3822)98-41-53
Тула (4872)74-02-29
Тюмень (3452)66-21-18
Ульяновск (8422)24-23-59
Уфа (347)229-48-12
Хабаровск (4212)92-98-04
Челябинск (351)202-03-61
Череповец (8202)49-02-64
Ярославль (4852)69-52-93

Dirt compensation

The smoke detector has an automatic dirt compensation feature. This means that the sensitivity of the smoke chamber adapts to its degree of dirt and thereby significantly reduces the probability of false alarms.

Power-Up LED

During commissioning (turning the detector onto the baseplate), an LED indicates that the warning indicator has been successfully switched on. Installation is complete when the green LED flashes 30 seconds after the test button is pressed (for 2 minutes, every 8 seconds, 5 times in succession).

Mute function

False alarms can be muted for a period of 10 minutes using the test button. A beep sound indicating a malfunction can also be muted for 12 hours.

Self-monitoring with error display

The smoke detector automatically checks the functionality of its sensors, battery and electronics every 48 seconds. All detected faulty states are indicated by a combination of yellow LED error display and acoustic beep.

Monitoring of the sound generator

The sound generator of the detector is regularly and automatically checked for full functionality.

Monitoring of the smoke inlets

The Ei6500-SA2R /O is equipped with ultrasonic obstacle detection. This system regularly checks the smoke vents of the unit for dirt. It also monitors the area around the unit for obstacles within a radius of up to 0.5 meters that could prevent or slow down the smoke entering the detector. The occlusion and obstacle detection meet the requirements of DIN 14676-1, but the detection performance of the system is limited and depends on the size, shape, density and material of the objects present. The detection radius is automatically calibrated during installation to the location selected by the responsible installer.

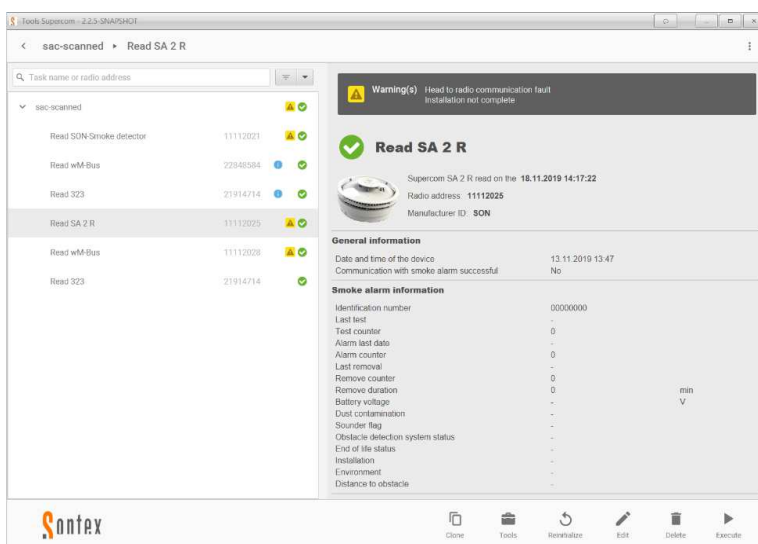
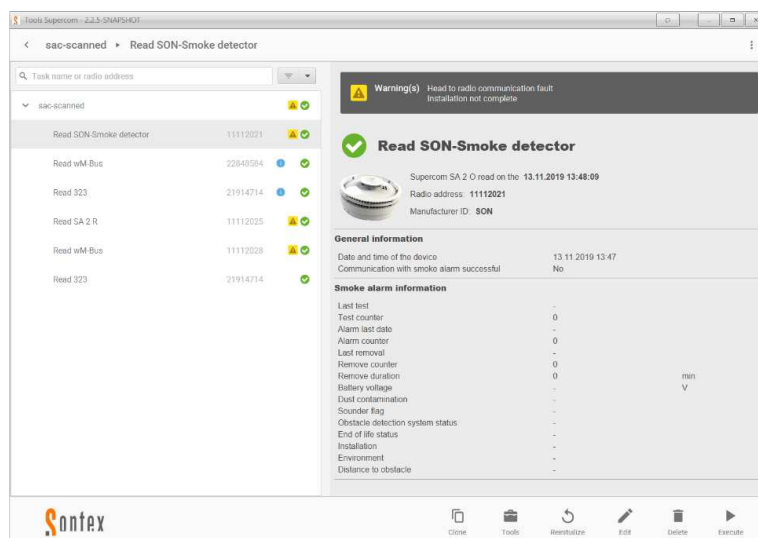
Suitable for bedrooms

During normal operation, there are no active, visible or audible indicators that could disturb the residents. The smoke detector is therefore particularly suitable for installation in bedrooms and children's rooms.

Technical Data

Sensor type	Scattered light
Mains power	3V-Lithium-Battery
Battery permanently installed	yes
Battery life time	min. 10 Years
Piezo sound level	89 dB(A) at 3 m
Test / Mute button	yes
Reduced test volume	yes
Networking possibility - wired - radio	no no
Mute in case of false alarm	yes, 10 Minutes
Dirt compensation	yes
Automatic self-monitoring	yes
Ready for use	Power-Up LED during commissioning, afterwards without optical display
Remote inspection	Method C
Communication Sontex Radio Accessibility: Frequency:	bidirectional (from 06:00 to 18:00 +1h in the night according to serial number, 7 days per week) 433.82 MHz
Communication wM-Bus OMS Accessibility: Frequency:	unidirectional (data transmission every 120 seconds, 12 hours per day, 7 days per week) 868,95 MHz
Encryption	AES-128 (Sontex Radio Mode 5, OMS Mode 5 or Mode 7). Individual AES key downloadable from Sontex Exchange Platform
ID-N°	Unique ID per detector
Operating / Storage temperature	0 to + 40° Celsius / - 10 to + 40° Celsius
Humidity	15 % to 95 % rel., no condensation
Weight	320 g
Dimension	Diameter 136 mm x 66 mm
Housing material	Plastic polystyrene (HB-classified according to UL94, self-extinguishing)
Degree of protection	IP 20
Mounting	Mounting base with dowels and screws (included in delivery)
Monitoring area	≤ 60 m ²
Transmission standard	EN 13757-4
Standards	EN 14604: 2005 + AC: 2008, DIN SPEC 91388:2019
Approvals	Kriwan 1772-Q-181135 / 1772-Q-191253

Readout example with Software Tools Supercom



По вопросам продаж и поддержки обращайтесь:

Архангельск (8182)63-90-72
Астана +7(7172)727-132
Астрахань (8512)99-46-04
Барнаул (3852)73-04-60
Белгород (4722)40-23-64
Брянск (4832)59-03-52
Владивосток (423)249-28-31
Волгоград (844)278-03-48
Вологда (8172)26-41-59
Воронеж (473)204-51-73
Екатеринбург (343)384-55-89
Иваново (4932)77-34-06
Ижевск (3412)26-03-58
Иркутск (395) 279-98-46
Киргизия (996)312-96-26-47

Казань (843)206-01-48
Калининград (4012)72-03-81
Калуга (4842)92-23-67
Кемерово (3842)65-04-62
Киров (8332)68-02-04
Краснодар (861)203-40-90
Красноярск (391)204-63-61
Курск (4712)77-13-04
Липецк (4742)52-20-81
Магнитогорск (3519)55-03-13
Москва (495)268-04-70
Мурманск (8152)59-64-93
Набережные Челны (8552)20-53-41
Нижний Новгород (831)429-08-12
Казахстан (772)734-952-31

Новокузнецк (3843)20-46-81
Новосибирск (383)227-86-73
Омск (3812)21-46-40
Орел (4862)44-53-42
Оренбург (3532)37-68-04
Пенза (8412)22-31-16
Пермь (342)205-81-47
Ростов-на-Дону (863)308-18-15
Рязань (4912)46-61-64
Самара (846)206-03-16
Санкт-Петербург (812)309-46-40
Саратов (845)249-38-78
Севастополь (8692)22-31-93
Симферополь (3652)67-13-56
Россия (495)268-04-70

Смоленск (4812)29-41-54
Сочи (862)225-72-31
Ставрополь (8652)20-65-13
Сургут (3462)77-98-35
Тверь (4822)63-31-35
Томск (3822)98-41-53
Тула (4872)74-02-29
Тюмень (3452)66-21-18
Ульяновск (8422)24-23-59
Уфа (347)229-48-12
Хабаровск (4212)92-98-04
Челябинск (351)202-03-61
Череповец (8202)49-02-64
Ярославль (4852)69-52-93

Эл. почта: sxf@nt-rt.ru || Сайт: <https://sontex.nt-rt.ru/>